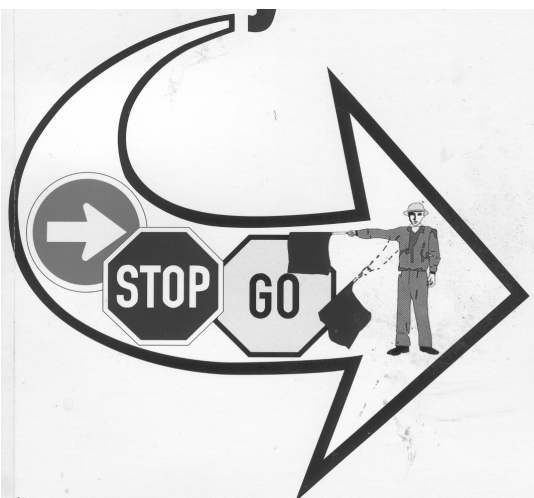


# K53



# FORM B



## INSTRUCTIONS

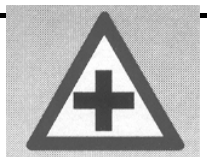
1. Theoretical knowledge of traffic matters is essential for safe driving. You are now going to do the theory test to determine your knowledge of traffic matters.
2. In the test there are questions on traffic rules, traffic signs and the controls of motor vehicles.
3. The road traffic signs which are referred to in the test, are on the map and are numbered according to rows (eg. A) and columns (eg. 5). The YIELD SIGN, for example, will be referred to as "sign A5". Please note that the rows are numbered from A to Z and then from AA onwards.
4. Each question has three possible answers marked A, B and C. Read each question carefully and choose the ONE answer which you consider the correct answer from the three answers given.
5. There could be other answers that are also correct, but which are not given and are therefore not applicable here. In the books you have studied there are sometimes questions with more than one correct answer. In this test every question has only ONE correct answer. The other answers given are wrong or only partially correct.
6. All questions must be answered on the ANSWER SHEET. For each question you must mark the correct answer from the three given answers.
7. The correct answer must be marked on the answer sheet by making a clear PENCIL MARK between the dotted lines in the space next to the correct question number selected by you.
8. If you, for example, select B as the correct answer to a question, mark it as follows :  
**A** =====                      **B** **—————**                      **C** =====
9. We are now going to do some practice examples. The questions that follow must be answered in a similar fashion.

1. Which rule is considered the most important RULE OF THE ROAD in South Africa?

- A. Always be courteous and considerate towards fellow road users
- B. Do not exceed the speed limit
- C. Keep to the left side of the road as far as is safe**

2. Sign L9 warns you about ..... ahead

- A. a first-aid post
- B. a railway crossing
- C. roads which cross**

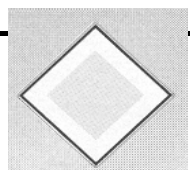


3. Under what circumstances, if any, are you allowed to drive your motor vehicle on the right-hand side of a public road with traffic moving in both directions?

- A. When you switch the emergency lights of your motor vehicle on
- B. When a traffic officer orders you to do so**
- C. Under no circumstances

4. Sign CC9 is found at a .....

- A. traffic circle where right of way is applicable**
- B. dangerous place where roadwork is being done
- C. sharp curve to the right



5. You may not obtain a learner's licence if .....
- (i) you already have a licence that authorises the driving of the same vehicle class
  - (ii) you are declared unfit to obtain a driving licence for a certain period and that period still prevails
  - (iii) your licence was suspended temporarily and that suspension has not yet expired

**SELECT THE CORRECT COMBINATION**

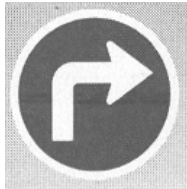
- A. (i), (ii) and (iii) are correct
- B. (ii) and (iii) only are correct
- C. (i) only is correct

6. Sign O9 warns you that there is .....
- A. possibly pedestrians ahead
  - B. **a marked pedestrian crossing ahead**
  - C. possibly school kids close to or in the road



7. When are you allowed to drive your vehicle on the right-hand side of a road with traffic in both directions ?
- A. When you switch the emergency lights of your vehicle on
  - B. **When a traffic officer orders you to do so**
  - C. Under no circumstances

8. Sign B8 shows you that you .....
- A. can expect a sharp bend to the right
  - B. will get a one-way road to the right
  - C. **must turn right at the next road**

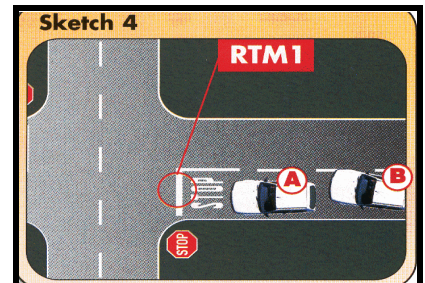


9. You are not allowed to stop .....
- A. where you are also prohibited to park
  - B. **5m from a bridge**
  - C. opposite a vehicle, where the roadway is 10m wide

10. Sign Q7 shows you that .....
- A. **the road narrows from both sides**
  - B. the freeway ends
  - C. there is a narrow bridge ahead



11. Road marking RTM1 in the sketch 4 in the sketch booklet shows you that you, .....
- A. **if you are driving in A, must stop before this line and drive on when it is safe**
  - B. if you are driving in A, must reduce speed and drive on if it is safe
  - C. if you are driving in B, can pass A if there are no other vehicles in the intersection



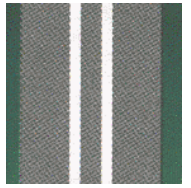
12. Warning sign S3 shows you that .....
- A. there is a possibility of a flood ahead
  - B. **the road ends because of water ahead**
  - C. there is a low water bridge ahead





13. At an intersection .....
- A. you must yield to oncoming traffic if you want to turn right
  - B. vehicle have the right of way over pedestrians
  - C. you can use a stop sign as a yield sign if there is no other traffic

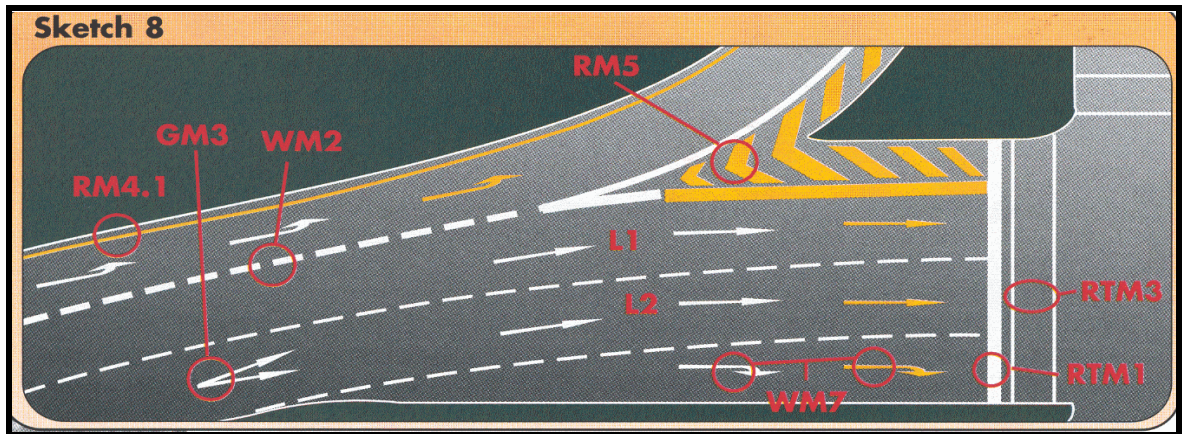
14. Road marking Y3 shows you that .....
- A. the road surface is uneven
  - B. traffic may not overtake or cross it on either side
  - C. it is a lane reserved for buses only



15. When you want to change lanes and drive from L1 to L2 (sketch booklet, sketch 8) you must .....
- (i) only do it when it is safe to do so
  - (ii) switch your indicators on in time to show what you are going to do
  - (iii) use the mirror(s) of your vehicle to ensure that you know of other traffic

**CHOOSE THE CORRECT COMBINATION**

- A. Only (i) and (ii) are correct
- B. All of the above are correct
- C. Only (ii) and (iii) are correct



16. Road marking Z5 warns you that .....
- A. there is a level crossing with one railway line ahead
  - B. roads cross ahead
  - C. the freeway ends ahead



17. If you see that someone wants to overtake you, you must .....
- (i) keep to the left as far as is safe
  - (ii) not drive faster
  - (iii) give hand signals to allow the person to pass safely

**SELECT THE CORRECT COMBINATION**

- A. (i) and (ii) only are correct
- B. All of the above are correct
- C. (ii) only is correct

18. When you see sign A6 you must .....
- A. know that that section of the road is for the use of pedestrians only
  - B. give right of way to pedestrians who would like to cross the street
  - C. stop because school kids might cross the road



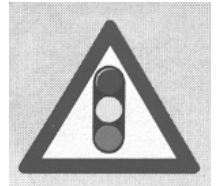
19. When you drive .....
- A. **you must have two hands on the steering wheel**
  - B. your vision of the road and the traffic must be unobstructed
  - C. you must wear shoes with rubber soles

20. Sign R1 warns you that the road .....
- A. has many curves
  - B. **is slippery when it is wet**
  - C. 's surface is damaged



21. The legal speed which you may drive .....
- A. is always 120 km/h outside towns/cities
  - B. can be determined by yourself if you look at the number of lanes that the road has
  - C. **is shown to you by signs next to the road**

22. Sign O4 warns you that .....
- A. there is a compulsory police stop ahead
  - B. **there is a robot ahead**
  - C. you are now entering an urban area

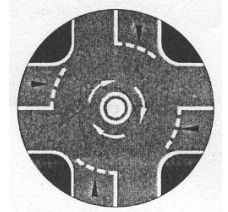


23. Where may you legally stop with your vehicle ?
- A. 4m from a tunnel
  - B. 5m from a pedestrian crossing
  - C. **6m from a railway crossing**

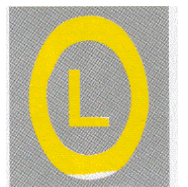
24. What does warning sign O3 show you ?
- A. The road winds ahead
  - B. A number of sharp curves is ahead
  - C. **A concealed entrance to the left is followed by one to the right**



25. If you are driving towards the circle in Z4 and there are also vehicles from the other three sides, you .....
- A. must always wait for the vehicle from your right before you drive on
  - B. **may drive on if you were the first vehicle over the line**
  - C. must stop with all the vehicles and only drive on when it is safe



26. Sign BB4 shows you that only .....
- A. **goods vehicles that load or unload**
  - B. motor cars that load or unload
  - C. construction vehicles

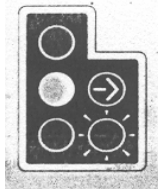


27. You may not .....
- (i) run the engine of your vehicle unattended
  - (ii) use your vehicle without a cap on the fuel tank
  - (iii) spin the wheels of your vehicle when pulling off

**SELECT THE CORRECT COMBINATION**

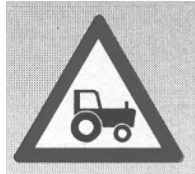
- A. (i) and (ii) only are correct
- B. (ii) only is correct
- C. **All of the above are correct**

28. When the robot is red and the green arrow flashes to the right (X5), it shows you that .....
- A. only pedestrians may walk
  - B. if you want to turn right, you may go**
  - C. all traffic must turn right there



29. What is the maximum period of time that a vehicle may be parked in one place on a road outside urban areas ?
- A. 7 days
  - B. 48 hours
  - C. 24 hours**

30. When you see sign S7 you must .....
- A. look out for road works where tractors operate
  - B. know that only agricultural vehicles may drive there
  - C. be on the lookout for agricultural vehicles that may be on the road**

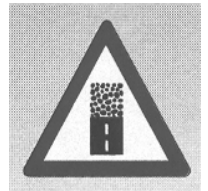


31. When may you not pass another vehicle? When you .....
- (i) are nearing the top of a hill
  - (ii) are nearing a curve
  - (iii) can only see 100m in front of you because of smoke over the road

**SELECT THE CORRECT COMBINATION**

- A. (i) only is correct
- B. All of the above are correct**
- C. (i) and (ii) only are correct

32. Warning sign Q4 shows you that .....
- A. the road on which you are driving is going to change to a gravel road**
  - B. potholes are to be found on the road ahead
  - C. the road is ending ahead



33. If you come to a traffic light and the red light flashes, you must .....
- A. stop and wait for the light to change to green before you go
  - B. stop and go only if it is safe to do so**
  - C. look out for a road block as the light shows you a police stop

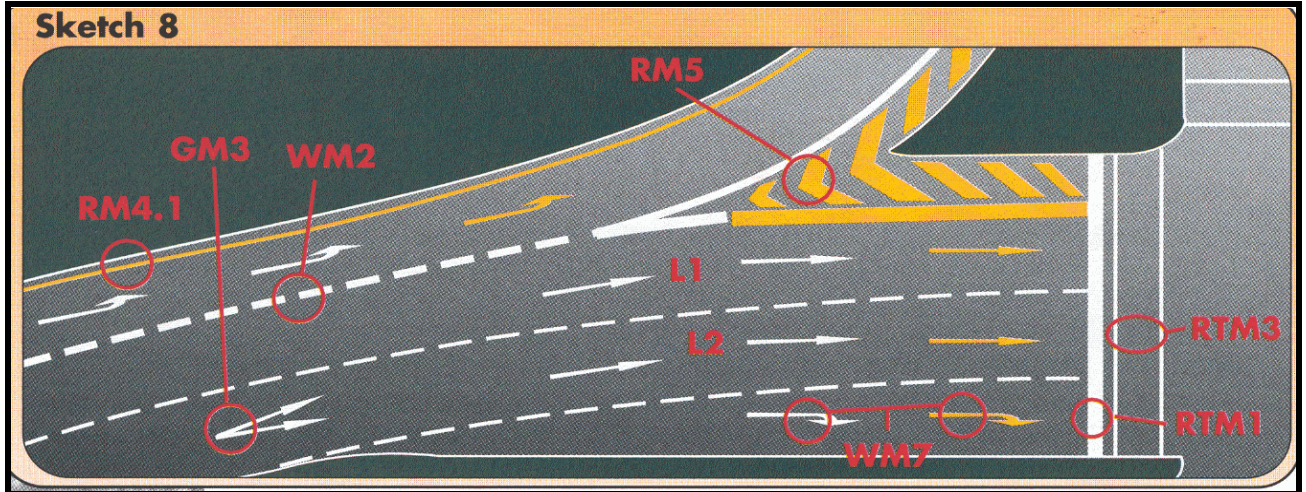
34. What does sign J8 shows you ?
- A. You are not allowed to travel faster than 100 km/h at night**
  - B. If you cannot see more than 100m in front of you, switch your lights on
  - C. Dangerous conditions for the next 100 km



35. The furthest that your vehicle's dim lights may shine in front of you, is .....m.
- A. 45**
  - B. 100
  - C. 150



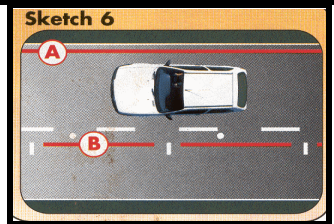
36. Road markings RTM3 in the sketch booklet sketch 8, .....
- show you that you may not stop further than the front one of the two
  - are the lines where pedestrians walk**
  - Are lines that indicate another traffic lane



37. What is important with regard to the hooter of your vehicle ?
- The tone or pitch of the sound may not change
  - Someone must hear it from a distance of at least 45m**
  - You may use it to get the attention of someone that you would like to offer a lift

38. Look at the sketch booklet, sketch 6. When you see road marking (A), you .....

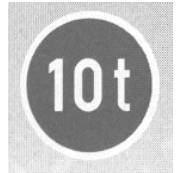
- may not park there because it is parking for ambulances only
- may not park there at all**
- know it is a lane reserved for emergency vehicles



39. You may .....
- drive your vehicle on the sidewalk
  - allow your vehicle to move backwards only if it safe to do so**
  - leave the engine of your vehicle running when you put petrol in it

40. If you see sign B2 you know that .....

- vehicles with a mass of 10 tonne and less may not drive there
- vehicles with a mass of more than 10 tonne may not drive there
- that section of the road can only carry vehicles that weigh up to 10 tonne**



41. When do you have the right of way?

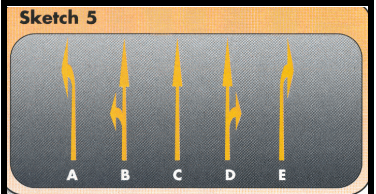
- When you are within a traffic circle
- When you have stopped first at a four-way stop
- When you want to turn right at an intersection in a two-way road

**SELECT THE CORRECT COMBINATION**

- (i) and (ii) only are correct**
- All of the above are correct
- Only (i) is correct

42. Arrow E in the sketch booklet, sketch 5, shows you that you .....

- A. **must turn right from that lane**
- B. can turn right or move straight on if it is safe
- C. can still change lanes if you want to go on straight



43. The last action that you must take before moving to another lane is to .....

- A. switch on your indicator
- B. **check the blind spot**
- C. look in the rear view mirror

44. Sign N3 shows you that there is a .....

- A. **sharp curve to the left ahead**
- B. obstruction left of the road
- C. detour to the left



45. You may overtake another vehicle on the left-hand side .....

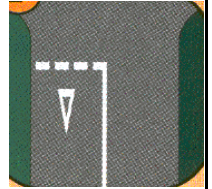
- (i) when the vehicle is going to turn right and the road is wide enough that it is not necessary to drive on the shoulder
- (ii) where the road has two lanes for traffic in the same direction
- (iii) if a police officer instructs you to do so

**SELECT THE CORRECT COMBINATION**

- A. (iii) only is correct
- B. (ii) and (iii) only are correct
- C. **All of the above are correct**

46. Road marking Y1 shows you that you must .....

- A. stop
- B. look out for school kids
- C. **yield to all users of the road and possibly also trains**

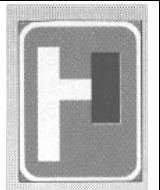


47. The licence for your vehicle (clearance certificate) is valid for .....

- A. **12 months**
- B. 90 days
- C. 21 days

48. Sign DD7 shows you that .....

- A. **the road turning to the right, ends ahead**
- B. you are not allowed to turn right there
- C. there is a T-junction to the right



49. Your vehicle's headlights must be switched on .....

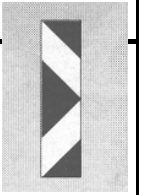
- (i) at any time of the day when you cannot see persons and vehicles 150m in front of you
- (ii) from sunset to sunrise
- (iii) when it rains and you cannot see vehicles 100m in front of you

**SELECT THE CORRECT COMBINATION**

- A. (ii) only is correct
- B. (i) and (ii) only are correct
- C. **All of the above are correct**



50. Sign T2 shows you that there is a .....
- A. curve to the left ahead
  - B. temporary obstruction left of the road**
  - C. temporary detour to the left



51. At an intersection .....
- A. you must yield to oncoming traffic if you want to turn right**
  - B. vehicles have the right of way over pedestrians
  - C. you can use a stop sign as a yield sign if there is no other traffic



52. Sign A2 shows you that you must .....
- A. turn left at the stop sign
  - B. stop and then turn left or drive straight on
  - C. stop but if you want to turn left, you can use it as a yield sign**

**READ THE FOLLOWING CAREFULLY AND CONTINUE WITH THE TEST. FROM HERE THE FOLLOWING QUESTIONS WILL APPLY TO YOU :**

Questions 53 to 60	Rules and signs for motor cycles	(CODE 1)
Questions 61 to 68	Controls of motor cycles	(CODE 1)
Questions 69 to 76	Rules and signs for motor vehicles	(CODE 2)
Questions 77 to 84	Controls of motor vehicles	(CODE 2)
Questions 85 to 92	Rules and signs for motor vehicles	(CODE 3)
Questions 93 to 100	Controls of motor vehicles	(CODE 3)

**PLEASE NOTE ROAD TRAFFIC LEGISLATION WAS AMENDED AND THE LEARNER'S LICENCE CODES HAVE CHANGED AS FOLLOWS :**

1. CODES 01, 02, 03, 04 AND 15 ARE NOW CODE 1
2. CODES 05, 06, 07 AND 08 ARE NOW CODE 2
3. CODES 10, 11, 13 AND 14 ARE NOW CODE 3

**IF YOU APPLY FOR A LEARNER'S LICENCE FOR ANY TYPE OF MOTOR CYCLE (CODE 1), YOU MUST NOW ANSWER QUESTIONS 53 TO 68. IF YOU APPLY FOR A CODE 2 LEARNER'S LICENCE, PAGE TO QUESTION 69. IF YOU APPLY FOR A CODE 3 LEARNER'S LICENCE, PAGE TO QUESTION 85.**

53. If your motor cycle has an engine size of .....cc, you may not use it on a freeway.
- A. 50
  - B. 125
  - C. 250

54. If you see C2, it means that .....
- A. you must ride there
  - B. you can ride there but it is not compulsory to do so
  - C. only certain motor cycles may ride there

55. When is it an offence when you are the holder of a learner's licence for a motor cycle ?
- (i) You ride on your motor cycle next to your instructor
  - (ii) You keep only one hand on the handle bars
  - (iii) You ride at 80 km/h outside built-up areas

**SELECT THE CORRECT COMBINATION**

- A. Only (i) and (ii) are correct
- B. All of the above are correct
- C. None of the above are correct

56. Sign L3 shows to motor cycle riders that .....
- A. they must ride to the left of this sign
  - B. they can ride to the left of this sign if they wish
  - C. the freeway ends ahead to the left

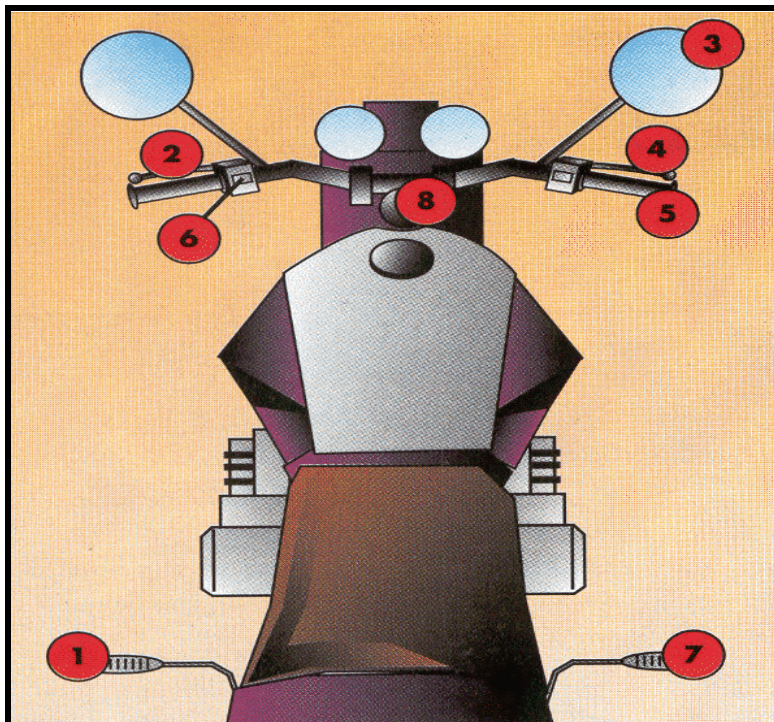
57. When may you as the holder of a learner's licence carry a passenger on your motor cycle ?
- A. For short journeys if you do not exceed the speed limit
  - B. In no case
  - C. When a motor cycle has a cylinder capacity of at least 100 cc

58. Sign J10 shows you that .....
- A. you may not ride slower than 60 km/h
  - B. you may not ride faster than 60 km/h
  - C. only motor cycles larger than 60cc may ride there

59. When you ride your motor cycle, you are not allowed to .....
- A. have only one hand on the handle bars
  - B. have one wheel of the motor cycle off the ground
  - C. carry a passenger on a 125cc motor cycle

60. Sign G8 shows to motor cycle riders that .....
- A. they must use that part of the road
  - B. they can use that part of the road if they wish
  - C. there is parking for motor cycles there

**SKETCH 1 IN THE SKETCH BOOKLET IS A REPRESENTATION OF THE CONTROLS OF A MOTOR CYCLE. STUDY IT AND THEN ANSWER QUESTIONS 61 TO 68.**



61. To turn, you must use number .....
- A. 8
  - B. 1
  - C. 7

62. *What controls must you never use in combination ?*

- A. 2 and 4
- B. 4 and 8
- C. 4 and 7

63. *What controls must you use when you are going to make a sharp turn ?*

- A. 1, 3, 5, 6 and 8 only
- B. 1, 2, 4 and 8 only
- C. 1, 2, 3, 4, 6 and 8 only

64. *To stop, you must use numbers .....*

- A. 4 and 7
- B. 2 and 7
- C. 1 and 2

65. *To change gears, you must use numbers .....*

- A. 1 and 5
- B. 2 and 7
- C. 1 and 2

66. *The distance it takes you to stop your motor cycle is .....*

- (i) longer on a wet road than on a dry road
- (ii) longer if you ride at a higher speed
- (iii) longer if it is loaded

**SELECT THE CORRECT COMBINATION**

- A. None of the above are correct
- B. All of the above are correct
- C. (i) only is correct

67. *To indicate that you are going to turn, you must use number .....*

- A. 6
- B. 4
- C. 8

68. *To ride faster, you must use number .....*

- A. 7
- B. 5
- C. 4

**END OF TEST FOR MOTOR CYCLES (CODE 1)**

**IF YOU APPLY FOR A CODE 2 LEARNER'S LICENCE, YOU MUST NOW ANSWER QUESTIONS 69 TO 84. IF YOU APPLY FOR A CODE 3 LEARNER'S LICENCE, PAGE TO QUESTION 85.**



69. The maximum distance between two vehicles which are being towed is .....m.

- A. 1,8
- B. 2,5
- C. 3,5

70. Sign F6 forbids .....

- A. minibuses to drive past this sign
- B. all motor vehicles to drive past this sign
- C. minibuses to pick up passengers



71. The lights of your vehicles parked on a public road between sunset and sunrise need not be kept lighted when the vehicle is parked .....

- (i) 10m from a lighted street lamp
- (ii) next to the roadway of the road
- (iii) in a demarcated parking area

**SELECT THE CORRECT COMBINATION**

- A. All of the above are correct
- B. Only (i) and (iii) are correct
- C. Only (ii) and (iii) are correct

72. Sign K3 shows you that you .....

- A. may not drive there between 06:00 and 09:00
- B. may not park there for more than 3 hours
- C. are not allowed to drive there between 06:00 and 09:00



73. It is illegal when you drive and a passenger .....

- A. sits directly behind you when you only have a learner's licence
- B. fiddles with the motor radio's volume knob
- C. rides on the bumper of your vehicle

74. Sign G9 shows you that .....

- A. you must use that part of the road
- B. you can use that part of the road if you wish
- C. there is parking for motor cars there



75. The tread pattern of your vehicle's tyres may not be less than .....mm.

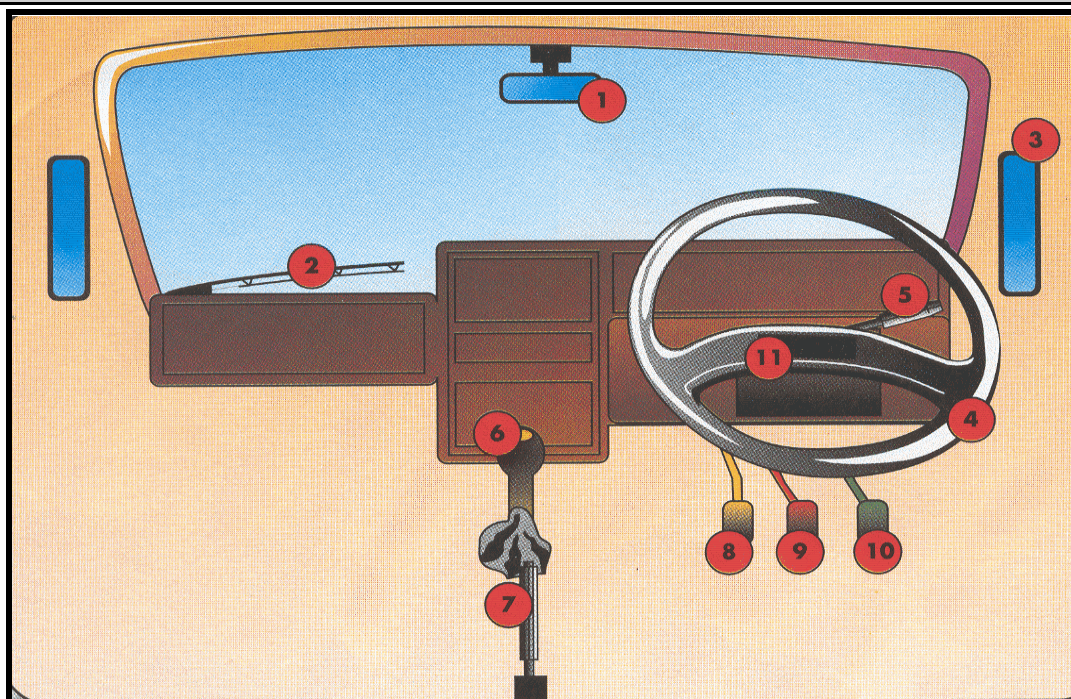
- A. 0,75
- B. 1
- C. 1,5

76. Sign F5 shows you that .....

- A. no taxi's may drive there
- B. no motor cars may drive there
- C. you may not park your motor car there



SKETCH 2 IN THE SKETCH BOOKLET IS A REPRESENTATION OF THE CONTROLS OF A CODE 2 VEHICLE. (LEVER NUMBER 5 IS MOUNTED ON THE RIGHT OF THE STEERING COLUMN IN SOME VEHICLES). STUDY IT AND THEN ANSWER QUESTIONS 77 TO 84.



77. To turn, number .... is used.

- A. 4
- B. 5
- C. 10

78. Number .... is not found in an automatic vehicle.

- A. 2
- B. 6
- C. 8

79. To ensure that your parked vehicle does not move, use number ....

- A. 7
- B. 8
- C. 9

80. To select a gear, you must use numbers ....

- A. 7 & 9
- B. 5 & 8
- C. 6 & 8

81. To accelerate your vehicle, you must use number ....

- A. 6
- B. 8
- C. 10

82. To stop your vehicle, you must use number ....

- A. 9
- B. 8
- C. 7

83. *The distance it takes the driver of a motor vehicle to stop it is .....*

- (i) longer on a wet road than on a dry road
- (ii) longer if the vehicle is travelling at a higher speed
- (iii) longer if the vehicle is loaded

**SELECT THE CORRECT COMBINATION**

- A. None of the above are correct
- B. All of the above are correct**
- C. (i) only is correct

84. *What controls must you use when you are going to turn sharp ?*

- A. 1, 3, 5, 6 and 8 only
- B. 3, 4, 5, 9 and 10 only
- C. 1, 3, 4, 5, 6, 8, 9 and 10 only**

**END OF TEST (CODE 2)**

**IF YOU APPLY FOR A CODE 3 LEARNER'S LICENCE, YOU MUST NOW ANSWER QUESTIONS 85 TO 100.**

85. *If you only have a learner's licence for a heavy motor vehicle, .....*

- (i) then there must be someone with you in the vehicle with the same driving licence
- (ii) you are not allowed to drive on the freeway
- (iii) no passengers are allowed with you in the vehicle

**SELECT THE CORRECT COMBINATION**

- A. All of the above are correct
- B. Only (i) is correct
- C. Only (i) and (iii) are correct

86. *Sign D10 shows you that .....*

- A. vehicles longer than 15m may not drive past this sign
- B. the road is only 15m wide past this sign
- C. no vehicles with trailers may drive past this sign

87. *You may transport goods on your vehicle that they .....*

- A. protrude 2,0m at the rear
- B. protrude 450mm in front
- C. are with the vehicle 2,4m wide

88. *Sign P9 warns you that you may not drive there if your vehicle is .....*

- A. longer than 4,42m
- B. higher than 4,42m
- C. wider than 4,42m



89. You may carry passengers in a vehicle that is being towed .....

- (i) if you only travel at 35 km/h
- (ii) if the vehicle that is being towed is a semi-trailer
- (iii) only if the vehicle that tows something is a tractor

**SELECT THE CORRECT COMBINATION**

- A. (i) and (ii) are correct
- B. All of the above are correct
- C. (ii) only is correct

90. Sign W6 shows you that .....

- A. the road forks ahead on a steep decline and you should slow down
- B. your brakes will be checked at a stop ahead where you must stop
- C. there is an arrestor bed ahead to be used when your brakes fail

91. You may not reverse your vehicle for further than .....

- A. 500 m
- B. 100 m
- C. as it is safe to do so

92. Sign G2 prohibits all ..... driving there.

- (i) vehicles conveying dangerous goods
- (ii) goods vehicles
- (iii) abnormal vehicles
- (iv) heavy vehicles

**SELECT THE CORRECT COMBINATION**

- A. All of the above are correct
- B. Only (i) is correct
- C. Only (iii) and (iv) are correct

**SKETCH 3 IN THE SKETCH BOOKLET IS A REPRESENTATION OF THE CONTROLS OF A CODE 3 VEHICLE. STUDY IT AND THEN ANSWER QUESTIONS 93 TO 100.**

93. To stop your vehicle, you must use number .....

- A. 9
- B. 8
- C. 7

94. The distance it takes the driver of a motor vehicle to stop it is .....

- (i) longer on a wet road than on a dry road
- (ii) longer if the vehicle is travelling at a higher speed
- (iii) longer if the vehicle is loaded

**SELECT THE CORRECT COMBINATION**

- A. None of the above are correct
- B. All of the above are correct
- C. (i) only is correct

95. To select a gear, you must use numbers .....

- A. 7 & 9
- B. 5 & 8
- C. 6 & 8

96. To ensure that your parked vehicle does not move, use number .....

- A. 7
- B. 8
- C. 9

97. To turn your vehicle, number ..... is used.

- A. 5
- B. 4
- C. 6

98. What controls must you use when you are going to turn sharp ?

- A. 1, 3, 5, 6 and 8 only
- B. 3, 4, 5, 9 and 10 only
- C. 1, 3, 4, 5, 6, 8, and 9 only

99. To indicate that you are going to turn, you must use number .....

- A. 3
- B. 5
- C. 11

100. To accelerate your vehicle, you must use number .....

- A. 6
- B. 8
- C. 10

**END OF TEST FOR HEAVY MOTOR VEHICLES (CODE 3)**