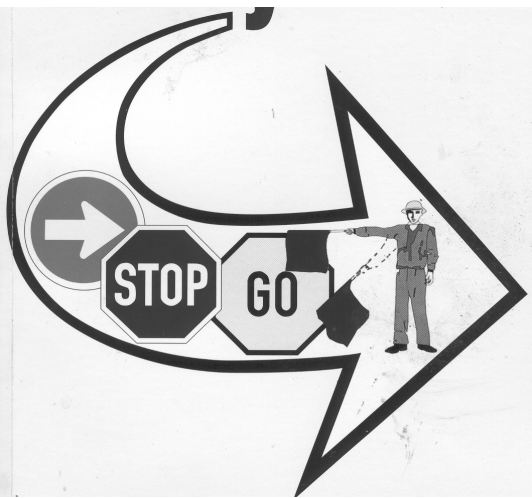


# K53



# FORM A



## INSTRUCTIONS

1. Theoretical knowledge of traffic matters is essential for safe driving. You are now going to do the theory test to determine your knowledge of traffic matters.
2. In the test there are questions on traffic rules, traffic signs and the controls of motor vehicles.
3. The road traffic signs which are referred to in the test, are on the map and are numbered according to rows (eg. A) and columns (eg. 5). The YIELD SIGN, for example, will be referred to as "sign A5". Please note that the rows are numbered from A to Z and then from AA onwards.
4. Each question has three possible answers marked A, B and C. Read each question carefully and choose the ONE answer which you consider the correct answer from the three answers given.
5. There could be other answers that are also correct, but which are not given and are therefore not applicable here. In the books you have studied there are sometimes questions with more than one correct answer. In this test every question has only ONE correct answer. The other answers given are wrong or only partially correct.
6. All questions must be answered on the ANSWER SHEET. For each question you must mark the correct answer from the three given answers.
7. The correct answer must be marked on the answer sheet by making a clear PENCIL MARK between the dotted lines in the space next to the correct question number selected by you.
8. If you, for example, select B as the correct answer to a question, mark it as follows :  
**A** =====                      **B** **—————**                      **C** =====
9. We are now going to do some practice examples. The questions that follow must be answered in a similar fashion.

1. Which rule is considered the most important RULE OF THE ROAD in South Africa?

- A. Always be courteous and considerate towards fellow road users
- B. Do not exceed the speed limit
- C. Keep to the left side of the road as far as is safe**

2. Sign L9 warns you about ..... ahead

- A. a first-aid post
- B. a railway crossing
- C. roads which cross**

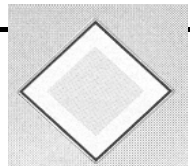


3. Under what circumstances, if any, are you allowed to drive your motor vehicle on the right-hand side of a public road with traffic moving in both directions?

- A. When you switch the emergency lights of your motor vehicle on
- B. When a traffic officer orders you to do so**
- C. Under no circumstances

4. Sign CC9 is found at a .....

- A. traffic circle where right of way is applicable**
- B. dangerous place where roadwork is being done
- C. sharp curve to the right



5. *You may not obtain a learner's licence if ....*
- (i) you already have a licence that authorises the driving of the same vehicle class
  - (ii) you are declared unfit to obtain a driving licence for a certain period and that period still prevails
  - (iii) your licence was suspended temporarily and that suspension has not yet expired

**SELECT THE CORRECT COMBINATION**

- A. (i) only is correct
- B. (ii) and (iii) only are correct
- C. (i), (ii) and (iii) are correct**

6. *What does warning sign L10 show you ?*

- A. Roads cross ahead and other vehicles from the side must stop or yield at the intersection**
- B. A railway line intersects with the road that you are travelling on
- C. A 4-way-stop will be found ahead where the roads cross

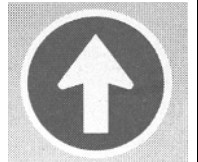


7. *A vehicle of which the brakes are not good, must be towed ....*

- A. with a rope
- B. with a tow-bar**
- C. on a trailer

8. *Sign B6 shows you that you ....*

- A. must only drive straight on**
- B. will get a freeway ahead
- C. will get a one-way road ahead



9. *A safe following distance is, when the vehicle in front of you suddenly stops, you could ....*

- A. stop without swerving**
- B. swerve and stop next to it
- C. swerve and pass

10. *Sign E1 ....*

- A. shows you that there is a hospital ahead where you must not make a noise
- B. shows you that you may not pick up people
- C. prohibits you from using your hooter**



11. *Unless otherwise shown by a sign, the general speed limit in a town or city is .... km/h.*

- A. 60**
- B. 80
- C. 100

12. *Sign P2 shows you that ....*

- A. it is a special lane for cyclists
- B. no cyclists are allowed there
- C. you must be on the lookout for cyclists**



13. *The furthest that your vehicle's dim lights may shine in front of you, is .....m*

- A. 45**
- B. 100
- C. 250

14. What does sign E4 show you?
- (i) You may not turn left ahead
  - (ii) You may not turn left there
  - (iii) There is a one-way to the right ahead

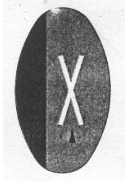


**SELECT THE CORRECT COMBINATION**

- A. (i) only is correct**
- B. (ii) and (iii) only are correct
- C. (i) and (iii) only are correct

15. You may not .....
- A. have passengers in the vehicle if you only have a learner's licence
  - B. leave your vehicle unattended while the engine is running**
  - C. drive in reverse for more than 100m

16. Road marking Z5 warns you that .....
- A. there is a level crossing with one railway line ahead**
  - B. roads cross ahead
  - C. the freeway ends ahead



17. The last action that you must take before moving to another lane is to .....
- A. switch on your indicator
  - B. check the blind spot**
  - C. look in the rear view mirror

18. Sign R1 shows you that the road .....
- A. winds
  - B. is untarred
  - C. is slippery**



19. If you want to change lanes, you must .....
- A. switch on your indicator and change lanes
  - B. give the necessary signal and after looking for other traffic, change lanes**
  - C. apply the brakes lightly and then change lanes

20. What does sign A3 show you?
- A. It is the same as a yield sign and you can proceed without stopping
  - B. Make sure that it is safe, wait until all traffic has departed and then drive on
  - C. Stop and drive on when it is safe to do so in the sequence that the vehicles stopped at the stop lines**



21. You may pass another vehicle on its left-hand side if it .....
- (i) indicates that it is going to turn right
  - (ii) drives on the right-hand side of a road with a shoulder where you can pass
  - (iii) drives in a town in the right-hand lane with two lanes in the same direction

**SELECT THE CORRECT COMBINATION**

- A. (i) and (iii) are correct**
- B. All of the above are correct
- C. (i) only is correct

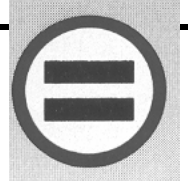
22. Sign U4 shows you that the road .....

- A. winds for 12 km
- B. winds 12 km from there
- C. is slippery for 12 km



23. You are not allowed to stop .....

- A. opposite a vehicle, where the road is 10m wide
- B. where you are also not allowed to park
- C. **5m from a bridge**

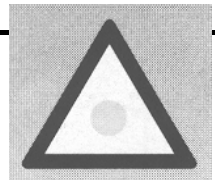


24. Sign E3 shows you that .....

- A. there is a road with two lanes ahead
- B. **you are not allowed to drive there without permission**
- C. a freeway starts

25. You may on a public road .....

- A. **pass another vehicle turning right, on the left-hand side without driving on the shoulder of the road**
- B. pass another vehicle at any place on the left-hand side if it is turning right
- C. not pass any vehicle on the left-hand side

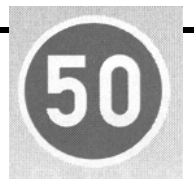


26. What does sign S1 when it flashes show you ?

- A. The police have a blockage ahead
- B. **There is danger in the road ahead**
- C. There is a robot ahead

27. At an intersection .....

- A. **pedestrians, who are already crossing the road when the red man signal starts showing, have right of way**
- B. you can pass another vehicle waiting to turn right on its left side by going off the road
- C. you can stop in it to off load passengers



28. What does sign B1 show you ?

- A. That sign is applicable to 50m
- B. You may not drive faster than 50 km/h
- C. **You may not drive slower than 50 km/h**

29. The fastest speed at which you may tow a vehicle with a rope is ..... km/h.

- A. 60
- B. 45
- C. **30**

30. Sign J8 shows you the .....

- A. **maximum speed allowed at night**
- B. recommended speed when your lights are on
- C. distance to the next town





31. You may cross or enter a public road .....
- A. if the road is clear of traffic for a short distance
  - B. if the road is clear of traffic for a long distance and can be done without obstructing traffic**
  - C. in any manner as long as you use your indicator in time

32. Sign E9 shows you that .....
- A. only motorcars may not pass each other
  - B. no motor vehicles may pass each other**
  - C. there is a bridge ahead where only one vehicle at a time can cross

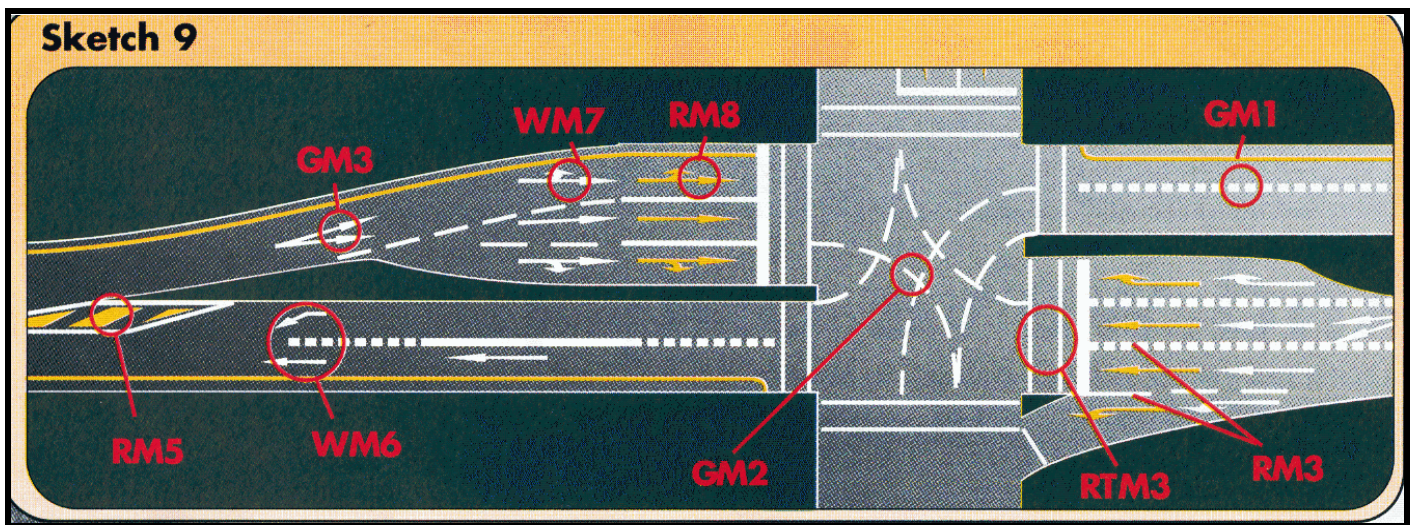


33. Your vehicles headlights must be switched on .....
- (i) at any time of the day when you cannot see persons and vehicles 150m in front of you
  - (ii) from sunset to sunrise
  - (iii) when it rains and you cannot see vehicles 100m in front of you

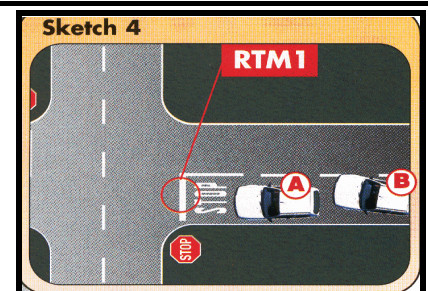
**SELECT THE CORRECT COMBINATION**

- A. (ii) only is correct
- B. (i) and (ii) only are correct
- C. All of the above are correct**

34. Road marking GM1 in the sketch booklet, sketch 9, .....
- A. shows the lanes for road users**
  - B. divides the road in two sections
  - C. is only found in a parking area

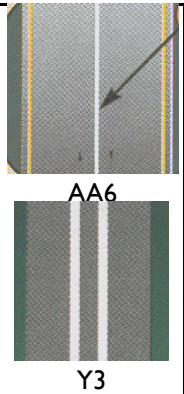


35. Road marking RTM1 in the sketch booklet, sketch 4, shows you that you, .....
- A. if you are driving in car A, must stop before this line**
  - B. if you are driving in car A, must reduce speed and drive on if it is safe
  - C. if you are driving in car B, can pass car A if there are no other vehicles in the intersection





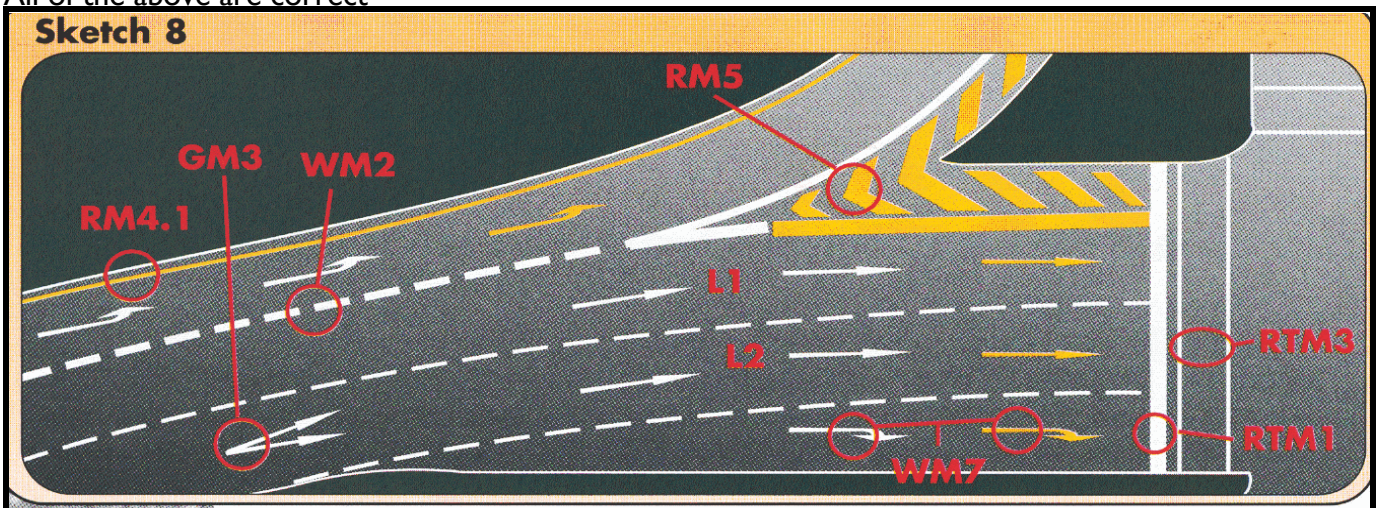
36. What is the different between road marking AA6 and road marking Y3 ?
- A. There is no difference between the two and both show you that you may not pass other vehicles
  - B. Both show you that you may not pass other vehicles but you will find AA6 on all roads and Y3 on freeways only
  - C. **AA6 shows you that you may not pass other vehicles while Y3 as well shows you that you may not drive over it to turn into a yard or anything else**



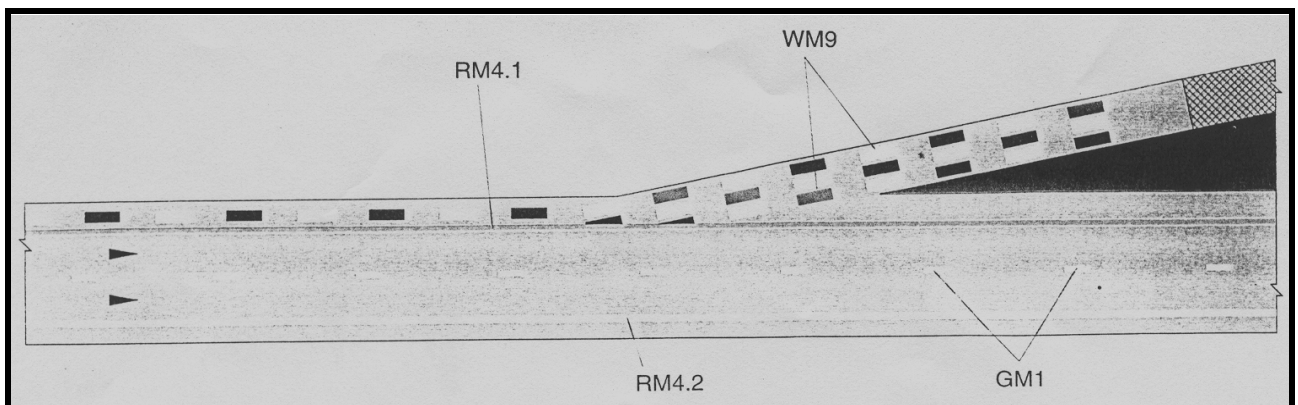
37. When are you allowed to drive in the section left of the yellow line, RM4.1 in the sketch booklet, sketch 8 or 10.
- (i) Any time when you want to allow another vehicle to pass you
  - (ii) In daytime when you want to allow another vehicle to pass you
  - (iii) When on a freeway with 2 lanes in both directions, you want to drive slower than 120 km/h
  - (iv) When you have a flat tyre and you want to park there to change it

**SELECT THE CORRECT COMBINATION**

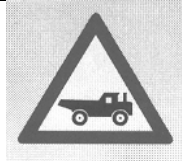
- A. (i), (iii) and (iv) only are correct
- B. **(ii) and (iv) only are correct**
- C. All of the above are correct



**SKETCH 10**



38. All road signs with a yellow background, e.g. R10, are ..... signs.
- A. warning
  - B. **temporary**
  - C. tourism



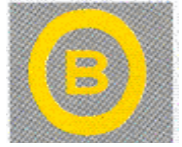
39. When may you **NOT** pass another vehicle? When you .....
- (i) are nearing the top of a hill
  - (ii) are nearing a curve
  - (iii) can only see 100m in front of you because of smoke over the road

**SELECT THE CORRECT COMBINATION**

- A. (i) only is correct
- B. All of the above are correct**
- C. (i) and (ii) only are correct

40. Marking BB3 shows you that only ..... may park here.

- A. buses**
- B. business vehicles
- C. minibuses

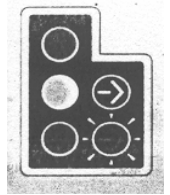


41. You may **NOT** drive into an intersection when :

- A. the robot (traffic signal) is yellow and you are already in the intersection
- B. the vehicle in front of you wants to turn right and the road is wide enough to pass on the left-hand side
- C. there is not enough space in the intersection to turn right without blocking other traffic**

42. When the robot is red and the green arrow flashes to the right as indicated in X5, it shows you that .....

- A. only pedestrians may walk
- B. if you want to turn right, you may go**
- C. all traffic must turn right there



43. When you were involved in an accident you .....

- (i) must immediately stop your vehicle
- (ii) must see if somebody is injured
- (iii) may use a little bit of alcohol for the shock

**SELECT THE CORRECT COMBINATION**

- A. (i) and (ii) only are correct**
- B. (ii) only is correct
- C. All of the above are correct

44. If you come to a robot and the red light flashes, you must .....

- A. stop and wait for the light to change to green before you go
- B. stop and go only if it is safe to do so**
- C. look out for a road block as the light shows you a police stop

45. The legal speed which you may drive .....

- A. is always 120 km/h outside towns/cities
- B. can be determined by yourself if you look at the number of lanes which the road has
- C. is shown to you by signs next to the road**



46. Sign A8 shows you that .....
- the road ends
  - you are not allowed to enter there**
  - the entry is for ambulances only

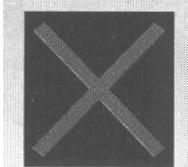


47. When do you have the right of way?
- When you are within a traffic circle
  - When you have stopped first at a four-way stop
  - When you want to turn right at an intersection in a two-way road

**SELECT THE CORRECT COMBINATION**

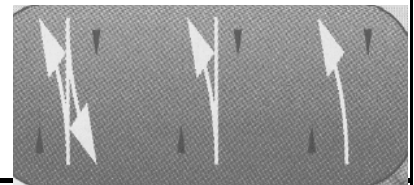
- (i) and (ii) only are correct**
- All of the above are correct
- (i) only is correct

48. When sign X8 is illuminated, it shows you that .....
- there is no throughway there
  - there is an unguarded railway crossing ahead
  - it is a lane only for traffic coming from the front**



49. If you come across an emergency vehicle on the road sounding a siren, you must .....
- flash your headlights to warn other traffic
  - give right of way to the emergency vehicle**
  - switch on your vehicles emergency lights and blow your hooter

50. Road markings AA4 show you that .....
- you are not allowed to pass another vehicle there
  - a line is going to begin which prohibits you from passing**
  - the lane splits into more lanes in the direction of the arrow



51. If you want to turn left with your vehicle, you must .....
- slow down completely, stop and then turn
  - first move to the right to enable him to turn left easily
  - give the necessary signal in good time**

52. Sign L4 prohibits you from .....
- using that section of the road during certain hours
  - parking there between 09:00 and 16:00
  - stopping there at certain hours**



**READ THE FOLLOWING CAREFULLY AND CONTINUE WITH THE TEST. FROM HERE THE FOLLOWING QUESTIONS WILL APPLY TO YOU:**

Questions 53 to 60	Rules and signs for motor cycles	(CODE 1)
Questions 61 to 68	Controls of motor cycles	(CODE 1)
Questions 69 to 76	Rules and signs for motor vehicles	(CODE 2)
Questions 77 to 84	Controls of motor vehicles	(CODE 2)
Questions 85 to 92	Rules and signs for motor vehicles	(CODE 3)
Questions 93 to 100	Controls of motor vehicles	(CODE 3)

**PLEASE NOTE ROAD TRAFFIC LEGISLATION WAS AMENDED AND THE LEARNER'S LICENCE CODES HAVE CHANGED AS FOLLOWS:**

- CODES 01, 02, 03, 04 AND 15 ARE NOW CODE 1**
- CODES 05, 06, 07 AND 08 ARE NOW CODE 2**
- CODES 10, 11, 13 AND 14 ARE NOW CODE 3**

**IF YOU APPLY FOR A LEARNER'S LICENCE FOR ANY TYPE OF MOTOR CYCLE (CODE 1), YOU MUST NOW ANSWER QUESTIONS 53 TO 68. IF YOU APPLY FOR A CODE 2 LEARNER'S LICENCE, PAGE TO QUESTION 69. IF YOU APPLY FOR A CODE 3 LEARNER'S LICENCE, PAGE TO QUESTION 85.**

53. *What is legal with regard to the towing of another vehicle?*

- A. You may tow it with a 750 cc motor cycle
- B. You may tow it with a tricycle
- C. You may not tow it with any motor cycle

54. *Sign L1 prohibits .....*

- A. all motor cycle riders to ride there
- B. motor cycles with an engine capacity of 125 cc and less to be there
- C. motor cycles with an engine capacity of more than 125 cc to be there

55. *You violate the traffic law if you ride your motor cycle or motor tricycle .....*

- A. conveying 2 adult persons in the sidecar
- B. with a code 1 learner's licence without supervision on a motor cycle with a sidecar, while seating is available in the sidecar
- C. next to another motor cycle in a one-way street while both of you are travelling in a separate lane

56. *Sign L3 shows to motor cycle riders that .....*

- A. they must ride to the left of this sign
- B. they can ride to the left of this sign if they wish
- C. the freeway ends ahead to the left

57. *Your motor cycle must have .....*

- A. 1 number plate in the front only
- B. 1 number plate in the front and 1 at the rear
- C. 1 number plate at the rear only

58. *Sign G8 shows to motor cycle riders that .....*

- A. they must use that part of the road
- B. they can use that part of the road if they wish
- C. there is parking for motor cycles there

59. *When is it an offence when you are the holder of a learner's licence for a motor cycle?*

- (i) You ride on your own motor cycle next to your instructor
- (ii) You keep only one hand on the handle-bars
- (iii) You ride at 80 km/h outside built-up areas

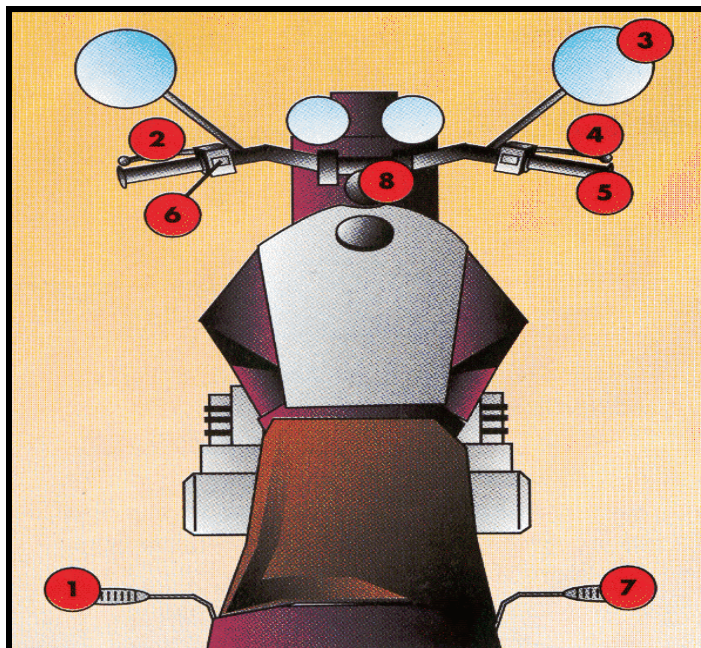
**SELECT THE CORRECT COMBINATION**

- A. All of the above are correct
- B. (ii) only is correct
- C. (i) and (ii) only are correct

60. *Sign J10 shows you that .....*

- A. you are riding in a city area
- B. it is recommended that you do not ride faster than 60 km/h
- C. the speed limit for you is 60 km/h

SKETCH I IN THE SKETCH BOOKLET IS A REPRESENTATION OF THE CONTROLS OF A MOTOR CYCLE. STUDY IT AND THEN ANSWER QUESTIONS 61 TO 68.



61. To ride faster, you must use number .....

- A. 7
- B. 5
- C. 4

62. To turn, you must use number .....

- A. 8
- B. 1
- C. 7

63. To stop, you must use numbers .....

- A. 4 and 7
- B. 2 and 7
- C. 1 and 2

64. To change gears, you must use numbers .....

- A. 1 and 5
- B. 2 and 7
- C. 1 and 2

65. The distance it takes you to stop your motor cycle is .....

- (i) longer on a wet road than on a dry road
- (ii) longer if you ride at a higher speed
- (iii) longer if it is loaded

**SELECT THE CORRECT COMBINATION**

- A. None of the above are correct
- B. All of the above are correct
- C. (i) only is correct

66. To indicate that you are going to turn, you must use number .....

- A. 6
- B. 4
- C. 8

67. What controls must you use when you are going to make a sharp turn ?

- A. 1, 3, 5, 6 and 8 only
- B. 1, 2, 4 and 8 only
- C. 1, 2, 3, 4, 6 and 8 only

68. What controls must you never use in combination ?

- A. 2 and 4
- B. 4 and 8
- C. 4 and 7

**END OF TEST FOR MOTOR CYCLES (CODE 1)**

**IF YOU APPLY FOR A CODE 2 LEARNER'S LICENCE, YOU MUST NOW ANSWER QUESTIONS 69 TO 84. IF YOU APPLY FOR A CODE 3 LEARNER'S LICENCE, PAGE TO QUESTION 85.**

69. Which is **ALLOWED** when towing another vehicle ?

- (i) A motor car tows another motor car with a rope and rives 40 km/h
- (ii) You tow another vehicle with a tow-bar
- (iii) A tractor tows a trailer with 10 passengers on it at a speed of 30 km/h

**SELECT THE CORRECT COMBINATION**

- A. All of the above are correct
- B. (ii) and (iii) only are correct**
- C. (i) only is correct

70. Sign F5 shows you that .....

- A. no taxi's may drive there
- B. no motor cars may drive there**
- C. you may not park your motor car there



71. What is true with regard to seat belts ?

- (i) If your vehicle has seat belts in the rear, is must be worn
- (ii) You need not where a seat belt when reversing
- (iii) Children younger than 14 years need not wear seat belts
- (iv) If the front seat has a seat belt, your only passenger may not sit at the back where there is no seat belt

**SELECT THE CORRECT COMBINATION**

- A. All of the above are correct
- B. (i), (ii) and (iv) only are correct**
- C. (i) only is correct

72. Sign K3 shows you that you .....

- A. may not drive there between 06:00 and 09:00**
- B. may not park there for more than 3 hours
- C. are only allowed to drive there between 06:00 and 09:00

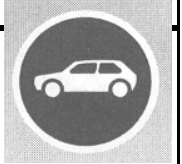




73. *If you only have a learner's licence for a light motor vehicle .....*
- (i) there must be someone with you in the vehicle with the same driving licence
  - (ii) you are not allowed to drive on a freeway
  - (iii) no passengers are allowed with you in the vehicle

**SELECT THE CORRECT COMBINATION**

- A. All the above are correct
- B. Only (i) and (iii) are correct**
- C. Only (i) is correct



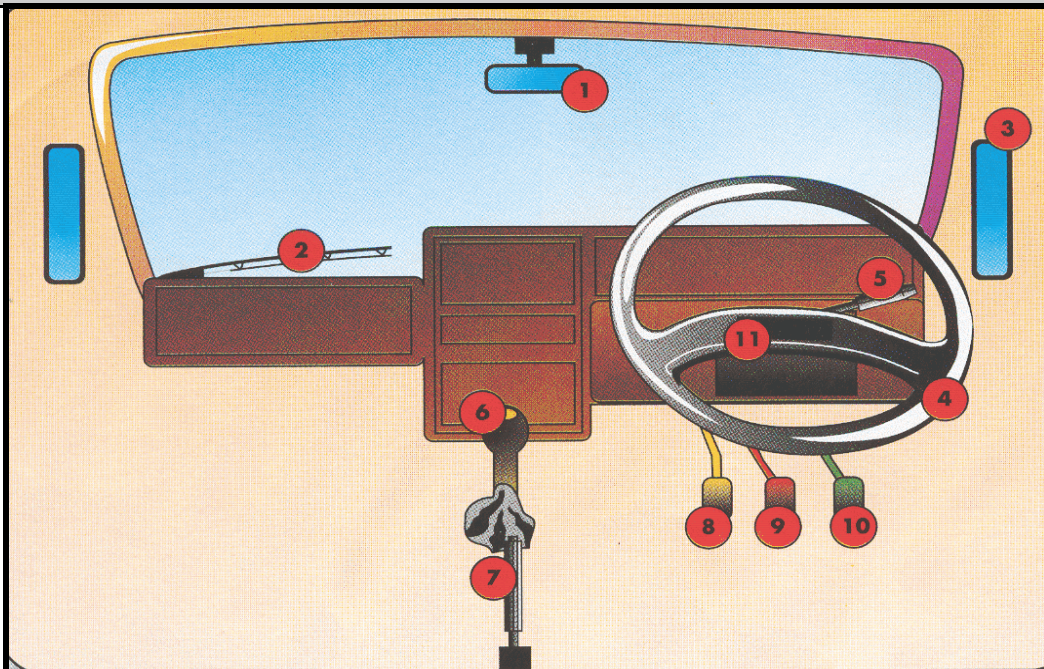
74. *Sign C3 shows you that .....*
- A. the area is for motor car taxi's only
  - B. you can drive there if you wish
  - C. you must drive there**

75. *The tread pattern of your vehicle's tyres may not be less than .....mm.*
- A. 0,75
  - B. 1**
  - C. 1,5



76. *Sign G9 shows you that .....*
- A. you must use that part of the road
  - B. you can use that part of the road is you wish
  - C. there is parking for motor cars there**

**SKETCH 2 IN THE SKETCH BOOKLET IS A REPRESENTATION OF THE CONTROLS OF A CODE 2 VEHICLE. (LEVER NUMBER 5 IS MOUNTED ON THE RIGHT OF THE STEERING COLUMN IN SOME VEHICLES). STUDY IT AND THEN ANSWER QUESTIONS 77 TO 84.**



77. *To select a gear, use must use numbers .....*
- A. 7 and 9
  - B. 5 and 8
  - C. 6 and 8**

78. To stop your vehicle, you must use number .....

- A. 9
- B. 8
- C. 7

79. Number ..... is not found in an automatic vehicle.

- A. 2
- B. 6
- C. 8

80. To turn, number ..... is used.

- A. 4
- B. 5
- C. 10

81. To ensure that your parked vehicle does not move, use number .....

- A. 7
- B. 8
- C. 9

82. To accelerate your vehicle, you must use number .....

- A. 6
- B. 8
- C. 10

83. What controls must you use when you are going to turn sharp ?

- A. 1, 3, 5, 6 and 8 only
- B. 3, 4, 5, 9 and 10 only
- C. 1, 3, 4, 5, 6, 8, 9 and 10 only

84. The distance it takes the driver of a motor vehicle to stop it is .....

- (i) longer on a wet road than on a dry road
- (ii) longer if the vehicle is travelling at a higher speed
- (iii) longer if the vehicle is loaded

**SELECT THE CORRECT COMBINATION**

- A. None of the above are correct
- B. All of the above are correct
- C. (i) only is correct

**END OF TEST (CODE 2)**

**IF YOU APPLY FOR A CODE 3 LEARNER'S LICENCE, YOU MUST NOW ANSWER QUESTIONS 85 TO 100.**

85. You may transport goods on your vehicle that they .....

- A. protrude 2,0m at the rear
- B. protrude 450mm in front
- C. are with the vehicle 2,4m wide

86. Sign B2 shows you that if your vehicle has a GVM of .....

- A. 8t, you must drive there at all times
- B. 12t, you must drive there at all times
- C. 10t, you can drive there whenever you want to

87. You may carry passengers in a vehicle that is being towed .....

- (i) if you only travel at 35 km/h
- (ii) if the vehicle that is being towed is a semi-trailer
- (iii) only if the vehicle that tows something is a tractor

**SELECT THE CORRECT COMBINATION**

- A. (i) and (ii) are correct
- B. All of the above are correct
- C. (ii) only is correct

88. Sign K2 shows that .....

- A. all heavy vehicles may drive here during the times showed on the sign
- B. tankers must use this road during the times showed on the sign
- C. vehicles carrying hazardous products may only use the road during the times showed on the sign

89. You may not reverse your vehicle for further than .....

- A. 500 m
- B. 100 m
- C. as it is safe to do so

90. Sign D10 shows you that .....

- A. vehicles longer than 15m may not drive past this sign
- B. the road is only 15m wide past this sign
- C. no vehicle with trailers may drive past this sign

91. If you only have a learner's licence for a heavy motor vehicle .....

- (i) there must be someone with you in the vehicle with the same driving licence
- (ii) you are not allowed to drive on a freeway
- (iii) no passengers are allowed with you in the vehicle

**SELECT THE CORRECT COMBINATION**

- A. All the above are correct
- B. Only (i) is correct
- C. Only (i) and (iii) are correct

92. Sign W6 shows you that .....

- A. the road forks ahead on a steep decline and you should slow down
- B. your brakes will be checked at a stop ahead where you must stop
- C. there is an arrestor bed ahead to be used when your brakes fail

**SKETCH 3 IN THE SKETCH BOOKLET IS A REPRESENTATION OF THE CONTROLS OF A CODE 3 VEHICLE. STUDY IT AND THEN ANSWER QUESTIONS 93 TO 100.**

93. *The distance it takes the driver of a motor vehicle to stop it is ....*

- (i) longer on a wet road than on a dry road
- (ii) longer if the vehicle is travelling at a higher speed
- (iii) longer if the vehicle is loaded

**SELECT THE CORRECT COMBINATION**

- A. None of the above are correct
- B. All of the above are correct
- C. (i) only is correct

94. *To select a gear, use must use numbers ....*

- A. 7 and 9
- B. 5 and 8
- C. 6 and 8

95. *To stop your vehicle, you must use number ....*

- A. 9
- B. 8
- C. 7

96. *To turn your vehicle, number .... is used.*

- A. 4
- B. 5
- C. 10

97. *To ensure that your parked vehicle does not move, use number ....*

- A. 7
- B. 8
- C. 9

98. *To accelerate your vehicle, you must use number ....*

- A. 6
- B. 8
- C. 10

99. *What controls must you use when you are going to turn sharp ?*

- A. 1, 3, 5, 6 and 8 only
- B. 3, 4, 5, 9 and 10 only
- C. 1, 3, 4, 5, 6, 8, 9 and 10 only

100. *To indicate that you are going to turn, you must use number ....*

- A. 3
- B. 5
- C. 11

**END OF TEST (CODE 3)**